

# Your Best Meat Provider in Cebu

*Steaks & Roasts* is a retail and bulk supplier of a wide array of high-quality meat products nationwide. We commenced our operations in September 2020, initially offering a range of DELI Products and Local Pork Cuts. As our business began to grow and the demand for high-quality imported meat surged, we made the strategic decision to expand our product line.

ESTD 2020

# STEAKS & ROASTS

*Your Best Meat Provider in Town*



# PRIME CUTS

The highest quality and most tender cuts that come from the youngest beef with the most abundant marbling. They are also called primal cuts because they are the foundation for all other beef cuts.

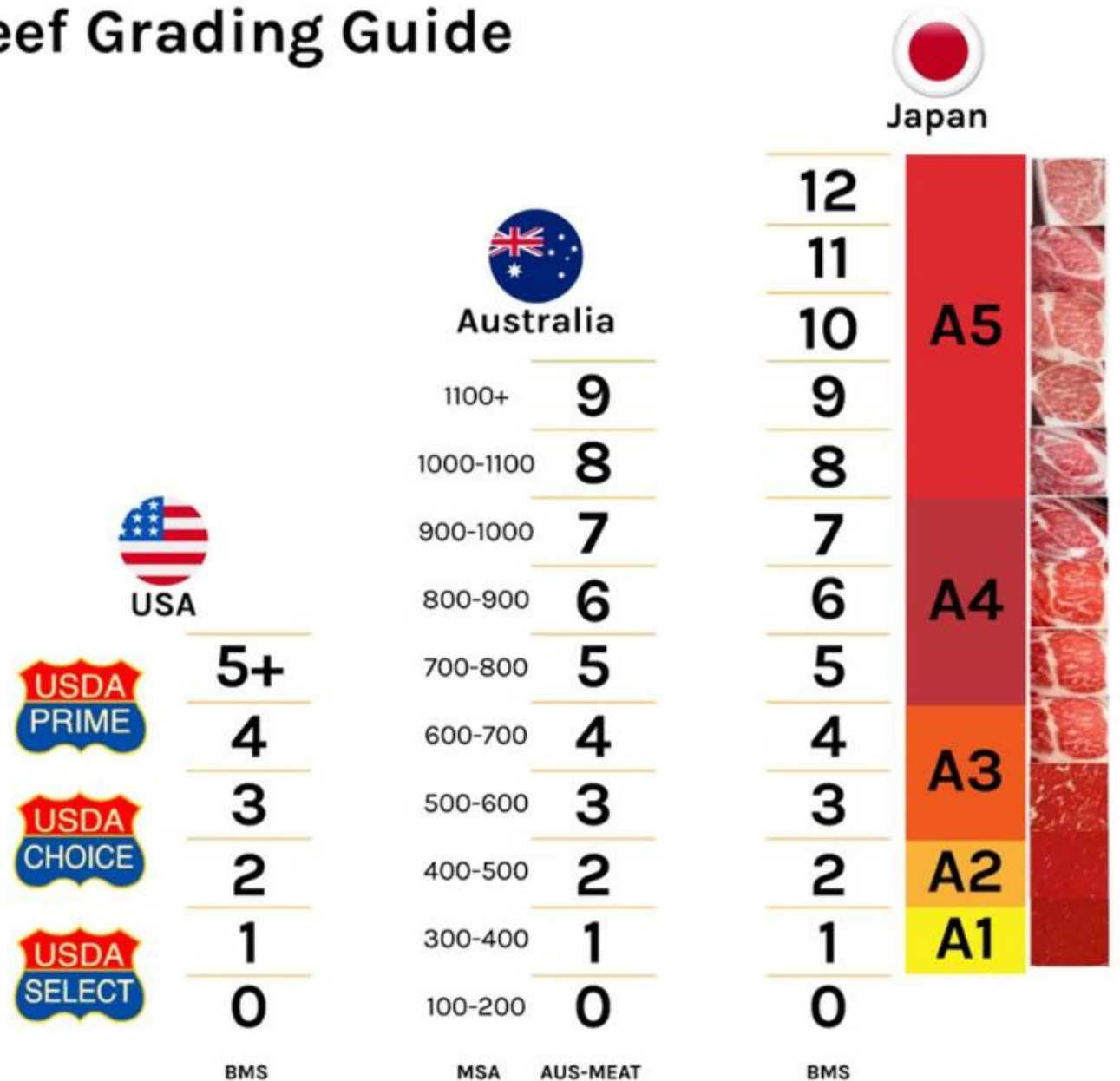


# BEEF GRADING

Beef grading sets the standards for the various quality levels of beef.

The grade is primarily determined by the degree of marbling – the small flecks of fat within the beef muscle. Marbling provides flavor, tenderness and juiciness to beef and improves overall palatability. Other grading factors include animal age, and color and texture of the muscle.

## Beef Grading Guide





# Wagyu (Japanese Beef)



## KAGOSHIMA

BMS 12

Description	Price / kg
<hr/>	
<b>A5 WAGYU RIB EYE</b>	
Slab (4 - 6kgs)	Php8,450.00
¾ -inch Cut per Steak	Php8,950.00
400g to 500g per Steak	
<b>A5 WAGYU SIRLOIN</b>	
Slab (4 - 6kgs)	Php8,000.00
¾ -inch Cut per Steak	Php8,500.00
400g to 600g per Steak	
<b>A5 WAGYU STRIPLOIN</b>	
Slab (4 - 6kgs)	Php8,200.00
1-inch Cut per Steak	Php8,700.00
300g to 450g per Steak	

## KAGOSHIMA

BMS 7

Description	Price / kg
<hr/>	
<b>A4 WAGYU RIB EYE</b>	
Slab (4 - 6kgs)	Php7,825.00
¾ -inch Cut per Steak	Php8,325.00
400g to 500g per Steak	
<b>A4 WAGYU SIRLOIN</b>	
Slab (4 - 6kgs)	Php7,500.00
¾ -inch Cut per Steak	Php8,000.00
400g to 600g per Steak	
<b>A4 WAGYU STRIPLOIN</b>	
Slab (4 - 6kgs)	Php7,700.00
1-inch Cut per Steak	Php8,200.00
300g to 450g per Steak	



# Wagyu (Japanese Beef)

## KAGOSHIMA

BMS 12

Description	Price / kg
A5 WAGYU RIB FINGERS	Php4,600.00
A5 WAGYU KARUBI	
Sukiyaki Cut (2mm per slice)	Php6,150.00
Yakiniku Cut (5mm per slice)	Php6,450.00

BMS 9

Description	Price / kg
A4 WAGYU KARUBI	
Sukiyaki Cut (2mm per slice)	Php5,500.00
Yakiniku Cut (5mm per slice)	Php5,825.00

## TAKAMORI DRUNKEN

BMS 12

Description	Price / kg
A5 WAGYU Picanha	
Roast (4 - 6kgs)	Php8,100.00
¾ -inch Cut per Steak	Php8,600.00
A5 WAGYU CHUCK CUBES	
1-inch Cut per Cube	Php6,750.00





# Wagyu (Japanese Beef)

## KOBE

BMS 12

Description	Price / kg
A5 WAGYU TRI-TIP	
1-inch Cut per Steak	Php6,750.00
A5 WAGYU Picanha	
Slab (4 - 6kgs)	Php8,450.00
¾-inch Cut per Steak	Php8,950.00

## OTHER ITEMS

Description	Price / kg
NK 1215 SAIKORO CUBES	
Pack (1kg)	Php1,600.00





# DRY Aged Angus Beef



Aged for 28 Days  
**Black Mountain Aged Angus Beef**  
USDA PRIME Grade

Description	Price / kg
-----	
DRY Aged ANGUS RIB EYE ROLL	
Slab (6 - 8kgs)	Php4,875.00
Roast (3 - 5kgs)	Php4,975.00
1-inch / 1.5-inch Cut Steak 300g to 800g per Steak	Php5,125.00

Aged for 28 Days  
**Black Mountain Aged Angus Beef**  
USDA Choice Grade

Description	Price / kg
-----	
DRY Aged ANGUS RIB EYE ROLL	
Slab (6 - 8kgs)	Php4,050.00
Roast (3 - 5kgs)	Php4,150.00
1-inch / 1.5-inch Cut Steak 300g to 800g per Steak	Php4,300.00



# WET Aged Angus Beef

**STEAKS  
&  
ROASTS**  
Your Best Meat Provider In Town  
2015-2022

Aged for 21 Days

## Black Mountain Aged Angus Beef USDA Choice Grade

Description	Price / kg
<b>WET Aged TOMAHAWK (<i>frenched</i>)</b>	
Slab (9 - 12kgs)	Php2,400.00
2.5-inch per Steak	Php2,650.00
1.2kg to 1.9kg per Steak	
<b>WET Aged STRIPLOIN</b>	
Slab (6 - 8kgs)	Php2,000.00
1-inch / 1.5-inch Cut Steak	Php2,300.00
300g to 800g per Steak	

Aged for 21 Days

## Black Mountain Aged Angus Beef USDA Choice Grade

Description	Price / kg
<b>WET Aged TENDERLOIN</b>	
Slab (1.5kgs - 3kgs)	Php3,375.00
<b>WET Aged PORTERHOUSE</b>	
Slab (3 - 5kgs)	Php2,150.00
1-inch / 1.5-inch / Steak	Php2,350.00
1kg to 1.2kg per Steak	
<b>WET Aged T-BONE</b>	
Slab (3 - 5kgs)	Php1,900.00
1-inch / 1.5-inch Steak Cut	Php2,150.00
1kg to 1.2kg per Steak	



**BLACK MOUNTAIN  
US BEEF**



# WET Aged Angus Beef



Aged for 21 Days

## Black Mountain Aged Angus Beef

USDA PRIME Grade

Description	Price / kg
<hr/>	
WET Aged PORTERHOUSE	
Slab (3 - 5kgs)	Php3,000.00
2.5-inch per Steak	Php3,250.00
1.2kg to 1.9kg per Steak	
WET Aged T-BONE	
Slab (3 - 5kgs)	Php2,700.00
1-inch / 1.5-inch per Steak	Php2,950.00
600g to 1.2kg per Steak	

Aged for 21 Days

## Black Mountain Aged Angus Beef

USDA PRIME Grade

Description	Price / kg
<hr/>	
WET Aged RIB EYE ROLL	
Slab (8 - 10kgs)	Php3,350.00
1-inch / 1.5-inch per Steak	Php3,600.00
600g to 1.2kg per Steak	



# Aged Certified Angus Beef (CAB)



Aged for 21 Days

## Harris Ranch Beef

USDA Upper 2/3 Choice Grade

Description	Price / kg
-----	
Aged CAB PRIME RIB ROLL	
Slab (8 - 11kgs)	Php2,350.00
Roast (3-Rib Bone   4-Rib Bone)	Php2,450.00
1-inch Cut per Rib Steak	Php2,600.00
500g to 600g per Steak	

Aged for 21 Days

## Harris Ranch Beef

USDA Upper 2/3 Choice Grade

Description	Price / kg
-----	
Aged CAB STRIPLOIN	
Slab (5 - 7kgs)	Php2,325.00
Roast (4-inch cut)	Php2,425.00
1-inch / 1.5-inch Cut per Steak	Php2,575.00
250g to 350g per Steak	



# Certified Angus Beef (CAB)



## Harris Ranch Beef

USDA Upper 2/3 Choice Grade

Description	Price / kg
<b>CAB SHORT RIBS</b>	
Slab (2 - 3kgs)	Php1,500.00
English Cut (3-inch in length)	Php1,600.00
¼-inch Cut per Strip	Php1,750.00
400g to 500g per Steak	
<b>CAB T-BONE</b>	
Slab (3 - 5kgs)	Php1,925.00
1.5-inch Cut per Steak	Php2,175.00
700g to 1,000g per Steak	

## Harris Ranch Beef

USDA Upper 2/3 Choice Grade

Description	Price / kg
<b>CAB RIB EYE ROLL</b>	
Slab (6 - 8kgs)	Php2,475.00
Roast (4-inch cut)	Php2,575.00
1-inch Cut per Steak	Php2,700.00
400g to 500g per Steak	
<b>CAB PORTERHOUSE</b>	
Slab (3 - 5kgs)	Php2,125.00
1.5-inch Cut per Steak	Php2,375.00
850g to 1.1kg per Steak	



# Certified Angus Beef (CAB)

## Iowa Beef Packers (IBP)

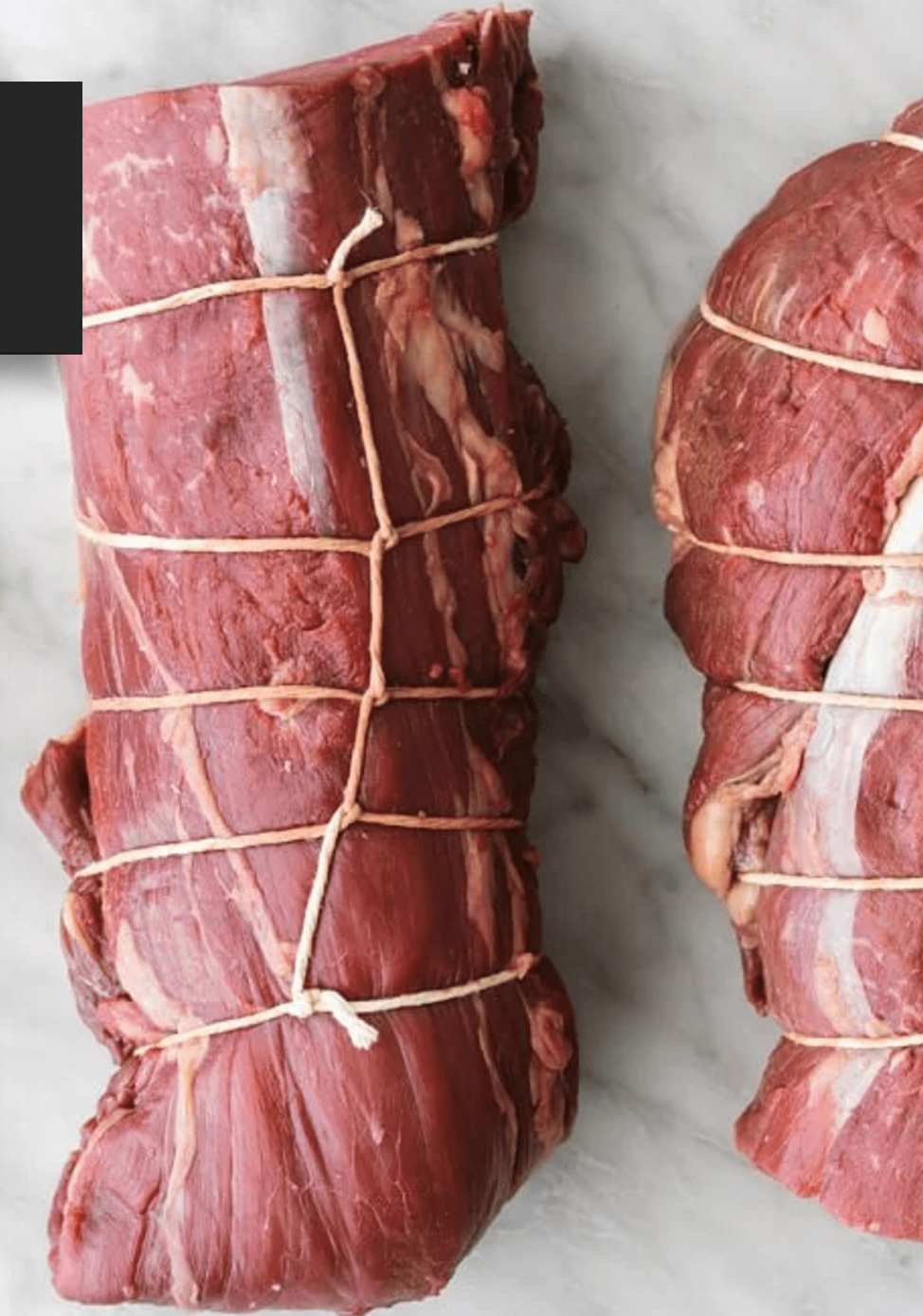
Upper 2/3 Choice Grade

Description	Price / kg
<hr/>	
<b>CAB TENDERLOIN</b>	
Slab (2 - 3kgs)	Php3,300.00
Chateaubriand	Php3,400.00
2.5-inch Cut per steak	Php3,550.00
<b>CAB TOP SIRLOIN BUTT</b>	
Slab (3 - 5kgs)	Php1,300.00
1-inch Cut per Steak	Php1,600.00
300g to 450g per Steak	

## Iowa Beef Packers (IBP)

Upper 2/3 Choice Grade

Description	Price / kg
<hr/>	
<b>CAB TOMAHAWK</b>	
Slab (2 - 3kgs)	Php2,450.00
2.5-inch Cut per Steak	Php2,700.00







# Premium Angus Beef (PAB)

## St. Helens Premium Angus Beef

USDA Upper 2/3 Choice Grade

Description	Price / kg
-----	
<b>PAB RIB EYE ROLL</b>	
Slab (6 - 8kgs)	Php2,400.00
Roast (4-inch Roast)	Php2,500.00
1-inch Cut per Steak	Php2,650.00
400g to 500g per Steak	

## St. Helens Premium Angus Beef

USDA Upper 2/3 Choice Grade

Description	Price / kg
-----	
<b>PAB PRIME RIB ROLL</b>	
Slab (8 - 11 kgs)	Php2,275.00
Roast (4-Rib & 3-Rib Bone Roast)	Php2,375.00



# Angus Beef

## Upper Iowa Angus Beef USDA Choice Grade

Description	Price / kg
ANGUS TOP BLADE Slab (3 - 4kgs)	Php1,250.00
ANGUS OYSTER BLADE STEAK 1-inch Cut per Steak 300g to 400g per Steak	Php1,450.00

## Demkota Angus Legacy USDA PRIME Grade

Description	Price / kg
ANGUS CHUCK ROLL Slab (7 - 9kgs)	Php1,100.00

## Demkota Angus Legacy USDA Choice Grade

Description	Price / kg
ANGUS RIB EYE ROLL Slab (7 - 9kgs)	Php2,200.00
1-inch cut per Steak	Php2,450.00





# Non-Breed Specific

## Mondelli

100% Grassfed Beef

Description	Price / kg
<b>CUBEROLL</b>	
Slab (2 - 3kgs)	Php800.00
1-inch Cut per Steak 300g to 400g per Steak	Php975.00
<b>CHUCK ROLL</b>	
Slab (3 - 5kgs)	Php700.00
<b>TENDERLOIN</b>	
Slab (1 - 3kgs)	Php1,350.00
<b>TOP BLADE</b>	
Slab (1 - 3kgs)	Php800.00

## Food Family / Dunleavy Foods

100% Grassfed Beef

Description	Price / kg
<b>BONE-IN SHIN SHANKS</b>	
Slab (4 - 6kgs)	Php400.00
1.5-inch Cross-Cut 1kg to 2kg per Pack of 3s	Php700.00
<b>ACHILLES TENDON</b>	
by BOX (20kgs to 25kgs)	Php500.00
<b>BONE MARROW</b>	
Whole	Php400.00 / kg
Canoe Boats - Cut in halves	Php450.00 / pack





# Non-Breed Specific

## Excel Fresh Meats

USDA Choice Grade

Description	Price / kg
<hr/>	
<b>PICANHA ROAST</b>	
Slab (2 - 3kgs)	Php1,800.00
1-inch Cut per Steak 200g to 300g per Steak	Php2,000.00
<b>SHORT PLATE</b>	
Slab (3 - 5 kgs)	Php650.00
<b>CHUCK FLAP TAIL</b>	
Pack (2-Slabs)	Php1,950.00

## Midfield

MSA 600 / AUS-MEAT 5

Description	Price / kg
<hr/>	
<b>CUBEROLL / RIB EYE</b>	
Slab (6 - 7kgs)	Php1,900.00
1-inch Cut per Steak 250g to 350g per Steak	Php2,150.00

## Mondelli

100% Grassfed Beef

Description	Price / kg
<hr/>	
<b>BR RIB FINGERS</b>	Php900.00





# Premium Lamb Cuts

## Wagstaff

100% Grassfed - Halal Certified

Description	Price / kg
<b>STANDARD RACK OF LAMB</b>	
Slab (800g - 2kgs)	Php1,450.00
¾-inch Cut per Steak	Php1,600.00
100g to 200g per Chop	
Packed by 4s	
<b>FRENCHED RACK OF LAMB</b>	
Slab (800g - 2kgs)	Php2,000.00
¾-inch Cut per Chop	Php2,200.00
100g to 200g per Chop	
Packed by 4s	

Description	Price / kg
<b>LEG OF LAMB</b>	
Bone-in Slab (2 - 4kgs)	Php1,200.00
Boneless Slab (1 - 3kgs)	Php1,350.00
<b>LAMB SHOULDER</b>	
Bone-in (2 - 4kgs)	Php900.00
Boneless (1 - 3kgs)	Php1,250.00
<b>LAMB SHANKS</b>	
Slab (350g - 500g)	Php1,000.00
2-inch Cut per Slice	Php1,250.00





# Burger Patties & Buns

## Burger Patties

Description	Price
100% US ANGUS BURGER PATTIES 5-inch in diameter Packed by 4s, 250g per Patty	Php900.00 / kilo
AU WAGYU BURGER PATTIES 4-inch in diameter Packed by 6s, 150g per Patty	Php950.00 / 900g

## Burger Patties

Description	Price
AU LAMB BURGER PATTIES 4-inch in diameter Packed by 5s, 200g per Patty	Php900.00 / kilo

## Burger Buns

Description	Price
BURGER BRIOCHE BUNS 5-inch in diameter Packed by 4s	Php160.00 / pack





# Premium Seafood Cuts

## Shellfish

Description	Price per kilo
Jumbo Scallops Meat	
16 to 20 pieces per kilo	Php2,000.00
1 Box, 10kgs	Php1,800.00
Giant Squid Tubes	
3 pieces per kilo	Php225.00
1 Box, 10kgs	Php200.00
Giant Squid Rings	
1 Box, 10kgs	Php2,200.00

## Salmon

Description	Price per kilo
Salmon Filet Skin-On	
1-kilo per pack	Php1,300.00
Norwegian Smoked Salmon	
1-kilo per pack	Php1,800.00
Salmon Steak Prime Cut	
200g to 300g per cut	Php1,200.00
Whole Norwegian Salmon	
5kgs to 6kgs per piece	Php800.00





# Premium Seafood Cuts

## Tuna

Description	Price per kilo
<b>Tuna Sashimi Bars</b>	
Retail	Php950.00
Wholesale, 1 box	Php900.00
<b>Tuna Loins</b>	
Retail	Php750.00
Wholesale, 1 Box	Php700.00

